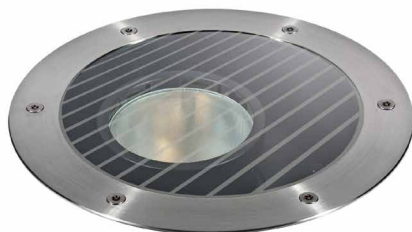
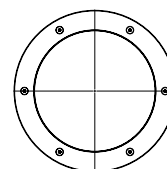


E013ZMH830ELASS | KEPLERO 280 Zoom

Adjustable recessed professional projector equipped with LED sources and variable beam openings

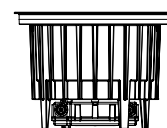


The fixture's photometric values can be found on the following pages



Ø210

Ø280



202

The figures on the drawing are expressed in mm.

SOURCE

High efficiency Chip on Board LED Ra80. 3500K colour temperature available on request.

Energy efficiency class: D

Nominal power: 30W

Nominal flux: 4919lm

Colour rendering index: 80

Rf: 83

Rg: 96

CCT nominal: 3000K

Lifetime (L80/B10): >50000h tq +25°C

ILLUMINOTECHNICAL CHARACTERISTICS

A patented hybrid lens/reflector Zoom optical system with the possibility of sliding and locking on the vertical axis in four positions for as many beam openings. Beam adjustability up to 20° on the vertical plane and 360° on the horizontal plane obtained by rototranslation of the optical group, with double aim locking system. Optic group pre-set for the installation of one or more dedicated optical accessories to be ordered separately.

Optic: ZOOM

Beam angles: SP, FL, MWFL, WFL

Optical efficiency: See photometries

Fixture flux: See photometries

Luminous efficacy: See photometries

Photobiological safety: Compliant with RG1 low risk group

MECHANICAL CHARACTERISTICS

Die-cast aluminium body with 3 layers of protection: anodised, cataphoresis and black paint. Brushed stainless steel (AISI 316) ultra flat decorative ring with bevelled edge (natural finish). Version with anti-slip protective glass for public pedestrian areas. Anti theft stainless steel A4 Torx screws.

Colour and finish: Brushed stainless steel

Weight: 5.25Kg

Version: ANTI-SLIP GLASS

Degree of protection: IP66,IP67,IP68

Mechanical Resistance: IK10

ELECTRICAL CHARACTERISTICS

Integrated IP68 ON-OFF electronic power supply equipped with IP68 waterproof connectors set for connection to the mains with a HO7RN8-F (max2x2.5mm²) cable. Fixture with a pass-through line.

Fixture Power: 35W

Power supply: 220-240Vac 50/60Hz

Insulation Class: CLASS 2

Type of driver / Control: ON-OFF

Driver included: YES

Class F: YES

SAFE FLICKER: PstLM=<1 and SVM=<0.4 (IEC TR 61547-1 and IEC TR 63158), to ensure a more comfortable and safe light

Ambient temperature: -25°C / +35°C

INSTALLATION

Nylon installation sleeve to be ordered separately as an accessory. The sleeve is pre-set for both flush or straight edge installation. 20kN resistance to static load.

NOTES

All light fixtures must be completed with an installation sleeve. IP68: the projector is not suitable for permanent underwater installation but can withstand temporary accidental immersion to a depth of 2 metres (max.24h). All versions of the KEPLERO family meet all the requirements of EN 60598-2-13 standard regarding drive-over and walk-over performances. Low temperatures on the glass make them suitable even for installation in "special areas", such as spaces for children. Uses the "Waterblock Plus" technical solution that involves resin coating the connection cables and completely resin coating the integrated driver limiting the risk of humidity reaching the fixture. 110-277Vac version available on request.

WARNING

Luminaire designed for disposal/recycling at end-of-life. Replaceable (LED only) light source by a professional. Replaceable control gear by a professional.

Due to the technological evolution of the electronic components, the data provided may be updated, and as such, confirmation must be requested during the order process.

Luminous flux and power supply have +/-10% tolerances with respect to the indicated value. tq +25°C (CIE 121).

We reserve the right to make technical changes.

Targetti Sankey S.r.l.
Via Pratese, 164
50145 Firenze - Italy
Tel: +39 055 37911
targetti.com
targetti@targetti.com

CCIAA Firenze
Share Capital:
€ 500.000,00
VAT N. (IT):
01537660480
R.E.A: FI-275656

TARGETTI

E013ZMH830ELASS | KEPLERO 280 Zoom
Adjustable recessed professional projector equipped with LED sources and variable beam openings



	3000K	H(m)	D(m)	Emax(lx)		
	Ra80					
				19°		
Fixture Power	35W	1	0.34	12389		
Source Flux	4919lm	2	0.67	3097		
Fixture Flux	1801lm	3	1.01	1377		
Efficacy	52lm/W	4	1.34	774		
TS782	Imax=2519cd/klm	Imax	12389cd	5	1.68	496



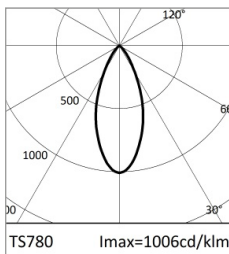
	3000K	H(m)	D(m)	Emax(lx)		
	Ra80					
				26°		
Fixture Power	35W	1	0.46	8583		
Source Flux	4919lm	2	0.93	2146		
Fixture Flux	2384lm	3	1.39	954		
Efficacy	68lm/W	4	1.86	536		
TS781	Imax=1745cd/klm	Imax	8583cd	5	2.32	343

SP

Fixture flux 1801lm
Luminous efficacy 52lm/W
Optical efficiency 37%

FL

Fixture flux 2384lm
Luminous efficacy 68lm/W
Optical efficiency 48%



	3000K	H(m)	D(m)	Emax(lx)		
	Ra80					
				43°		
Fixture Power	35W	1	0.78	4950		
Source Flux	4919lm	2	1.56	1238		
Fixture Flux	2978lm	3	2.34	550		
Efficacy	85lm/W	4	3.12	309		
TS780	Imax=1006cd/klm	Imax	4950cd	5	3.90	198



	3000K	H(m)	D(m)	Emax(lx)		
	Ra80					
				64°		
Fixture Power	35W	1	1.25	2945		
Source Flux	4919lm	2	2.50	736		
Fixture Flux	3124lm	3	3.75	327		
Efficacy	90lm/W	4	5.00	184		
TS779	Imax=599cd/klm	Imax	2945cd	5	6.25	118

MWFL

Fixture flux 2978lm
Luminous efficacy 85lm/W
Optical efficiency 61%

WFL

Fixture flux 3124lm
Luminous efficacy 90lm/W
Optical efficiency 64%

Due to the technological evolution of the electronic components, the data provided may be updated, and as such, confirmation must be requested during the order process. Luminous flux and power supply have +/-10% tolerances with respect to the indicated value. tq +25°C (CIE 121).

Targetti Sankey S.r.l.
Via Pratese, 164
50145 Firenze - Italy
Tel: +39 055 37911
targetti.com
targetti@targetti.com

CCIAA Firenze
Share Capital:
€ 500.000,00
VAT N. (IT):
01537660480
R.E.A: FI-275656



We reserve the right to make technical changes.

E013ZMH830ELASS | KEPLERO 280 Zoom

Adjustable recessed professional projector equipped with LED sources and variable beam openings

Related codes

Sleeve



Code

1E2394

Grey nylon installation sleeve.
The sleeve is pre-set for both flush or straight edge installation.
Complete with dedicated cover cap for installations in concrete.
Flush ring Ø 286 H.225.
Straight edge ring Ø 271 H. 223.

Accessories

Filter



Ø mm

Code

101

1T1696

Flat striped glass blade light refractive filter.
This makes the beam take on an oval shape and when combined with spotlights, the light blade appears more prominent.

Grid



Ø mm

Code

101

1T1699

Anti-glare louver.
Black painted metal honeycomb structure.

Shutter



Colour

Code

●

1E2402

Half-moon shutter.

Tool



Code

1E2496

Metal handle for fixture removal



Code

1E2495

Features TORX HEAD, TX 30.

Due to the technological evolution of the electronic components, the data provided may be updated, and as such, confirmation must be requested during the order process.
Luminous flux and power supply have +/-10% tolerances with respect to the indicated value. tq +25°C (CIE 121).

We reserve the right to make technical changes.

Targetti Sankey S.r.l.
Via Pratese, 164
50145 Firenze - Italy
Tel: +39 055 37911
targetti.com
targetti@targetti.com

CCIAA Firenze
Share Capital:
€ 500.000,00
VAT N. (IT):
01537660480
R.E.A: FI-275656

TARGETTI

E013ZMH830ELASS | KEPLERO 280 Zoom

Adjustable recessed professional projector equipped with LED sources and variable beam openings

Tool



Code

1E0388

Sucker tool to raise the glass.

Connector



Code

1E2769

Linear connection box IP66/IP68.
5 poles max. wire section 1.5mm².
Cable diameter range from 7 to 12mm.



Code

1E2494

Multiple connection box IP68.
1 IN - 3 OUT 4 poles max. wire section 2.5mm².
Cable diameter range from 6 to 12mm.

Surge protector



Code

A013B

Surge protector compatible with CLASS II lighting fixtures and electronic drivers.
Operating voltage 220-240Vac.
SPD type 2+3.
Max surge protection 10kV.
CLASS II
IP67

Due to the technological evolution of the electronic components, the data provided may be updated, and as such, confirmation must be requested during the order process.

Luminous flux and power supply have +/-10% tolerances with respect to the indicated value. tq +25°C (CIE 121).

We reserve the right to make technical changes.

Targetti Sankey S.r.l.
Via Pratese, 164
50145 Firenze - Italy
Tel: +39 055 37911
targetti.com
targetti@targetti.com

CCIAA Firenze
Share Capital:
€ 500.000,00
VAT N. (IT):
01537660480
R.E.A: FI-275656

TARGETTI